

SUBMITTAL RECORD _____
 JOB _____
 LOCATION _____
 SUBMITTED TO _____
 SUBMITTAL PREPARED BY _____
 APPROVED BY _____
 DATE _____

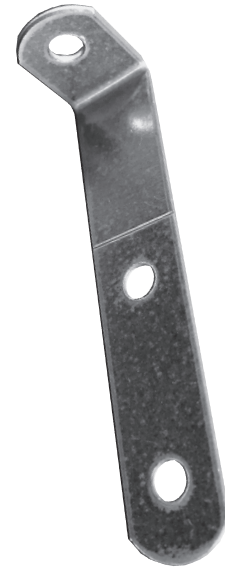


Submittal Form

Multi-Duct 'L' Bracket

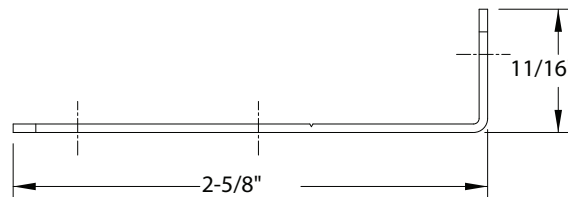
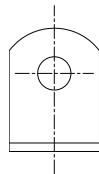
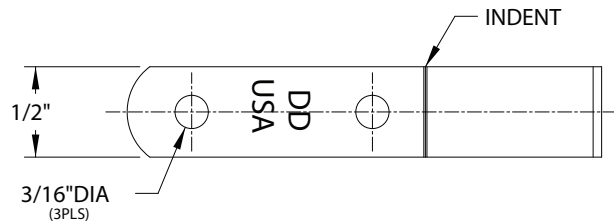
DESCRIPTION

The L Bracket from Duro Dyne is a versatile tool for use in hanging ductwork in residential applications. This sturdy 18 Gauge bracket easily screws in ductwork and ceiling anchors to provide quick attachment points. A score line is set at 1" from the corner to assist in spacing when supply ductwork is required to be 1" away from combustibles. The score line is also a useful tool when clearance is needed for external duct wrap or can be used as a bend mark when different formations such as a Z bracket is needed. There are two pre drilled holes placed at 1" center spacing for ease of attachment when in the field or being installed overhead. The L Bracket is available in four package qty variations for your convenience. Made in the U.S.A. with U.S.A. steel.



FEATURES

- Made in USA
- 18 ga galvanized steel
- 1" scribe for proper placement on wrapped duct
- Rounded safety corners
- Two predrilled holes at 1" center



Item #	Code	Description	Quantity
70027	MDB12	1/2in Wide Multi-Duct 'L' Bracket	100/Box
70028	MDB12Q	1/2in Wide Multi-Duct 'L' Bracket	250/Box
70029	MDB12F	1/2in Wide Multi-Duct 'L' Bracket	500/Box
70030	MDB12B	1/2in Wide Multi-Duct 'L' Bracket Bulk	1000/Box

Duro Dyne Corporate Headquarters, Bay Shore, NY
 631-249-9000 • Fax: 631-249-8346

Duro Dyne Midwest • Duro Dyne West • Duro Dyne Canada
 www.durodyne.com • E-mail: durodyne@durodyne.com



©2020 Duro Dyne Corporation
 Printed in USA 10/2020
 BO030424