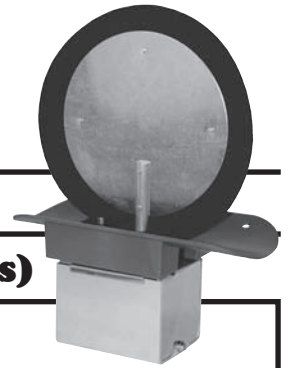


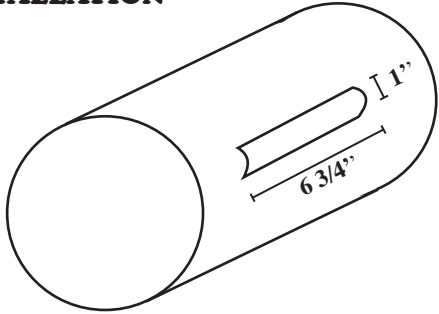
# DuroZone<sup>®</sup>

## INSTALLATION INSTRUCTIONS

### SPRING RETURN RETRO FIT DAMPER (24 volts)



#### INSTALLATION



1. Cut a 1 inch x 6-3/4 inch slot in pipe. Slot runs lengthwise down pipe.
2. Slide damper through slot, be sure gasket stays in position to seal slot.
3. Secure with 8 x 1/2 self drilling screws. **DO NOT USE LONGER SCREWS AS THEY COULD POTENTIALLY INTERFERE WITH DAMPER OPERATION.**

#### MOTOR LEAD IDENTIFICATION

Yellow and Orange leads: 24 volt input AC Only

**- IMPORTANT -**

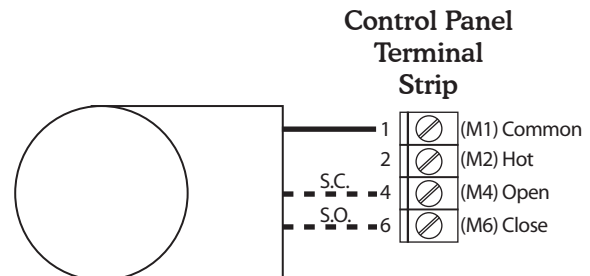
This motor is designed for use with 24 Volt VAC power source.

**- WIRE ACCORDING TO LOCAL CODE -**

#### TYPICAL WIRING

To Control Panel Part# 35226 (SMZ2SW)  
35227 (SMZ3SW) /35229 (SMZAC)  
35235 (JTZHP) /35236 (ED3) /35237 (ED4)

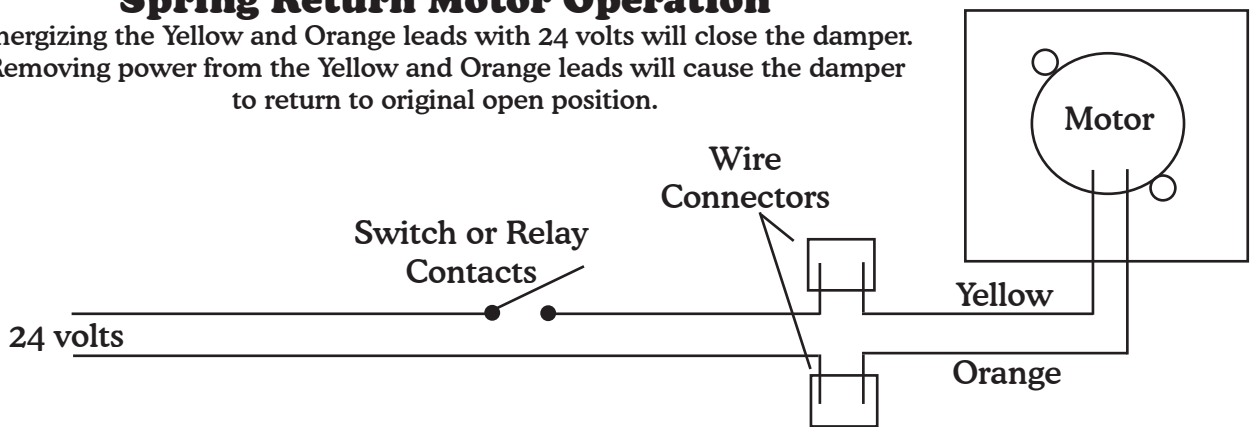
**NOTE:** On SMZ Panels it is recommended to leave the damper switches on the control panel in the open position.



Wiring diagram for a spring return damper.

#### Spring Return Motor Operation

Energizing the Yellow and Orange leads with 24 volts will close the damper. Removing power from the Yellow and Orange leads will cause the damper to return to original open position.



Duro Dyne East • Bay Shore, NY 11706 • Phone: 631-249-9000 • Fax: 631-249-8346  
Duro Dyne Midwest • Fairfield, OH 45011 • Phone: 513-870-6000 • Fax: 513-870-6005  
Duro Dyne West • Santa Fe Springs, CA 90670 • Phone: 562-926-1774 • Fax: 562-926-5778  
Duro Dyne Canada • Lachine • Quebec • Canada • Phone: 514-422-9760 • Fax: 514-636-0328

©2007 Duro Dyne Corporation  
Printed in USA 07/2007

#### ALL DuroZone DAMPERS FEATURE:

- 5 year limited warranty
- Controlled bypass
- Maintenance free operation
- 100% factory testing
- Screwless terminals
- Custom dampers and special controls are available on request.