

# DuroZone®

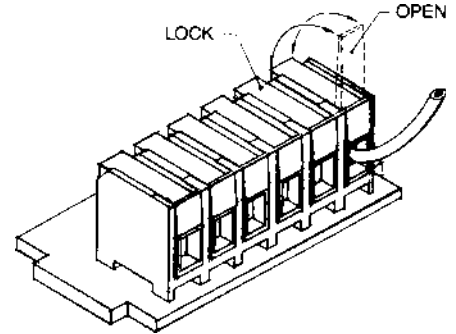
## INSTALLATION INSTRUCTIONS

### FA SERIES FRESH AIR DAMPER



#### MOTOR TERMINALS

1. Trim 1/4" off end of Control Wiring.
2. Flip white tab up on Damper Motor Terminal Strip.
3. Insert trimmed Control Wire.
4. Flip white tab down.

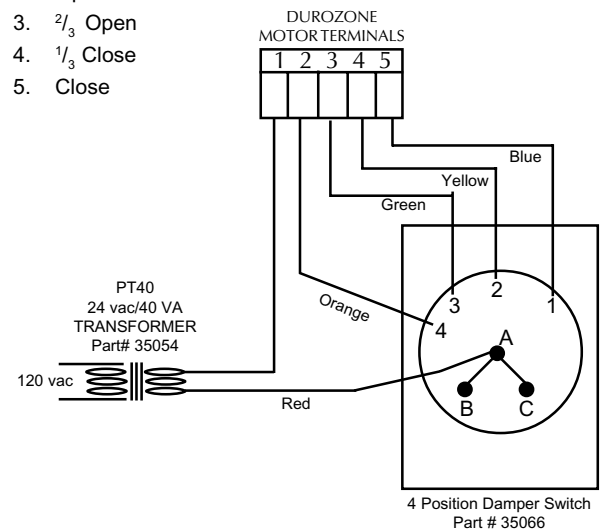


#### MOTOR TERMINAL IDENTIFICATION

##### 4 Position Damper Terminals Board

Terminal Function

1. Common
2. Open
3. 2/3 Open
4. 1/3 Close
5. Close



Duro Dyne East • Farmingdale, NY 11735 • Phone: 631-249-9000 • Fax: 631-249-8346  
 Duro Dyne Midwest • Fairfield, OH 45011 • Phone: 513-870-6000 • Fax: 513-870-6005  
 Duro Dyne West • Santa Fe Springs, CA 90670 • Phone: 562-926-1774 • Fax: 562-926-5778  
 Duro Dyne Canada • Lachine • Quebec • Canada • Phone: 514-422-9760 • Fax: 514-636-0328

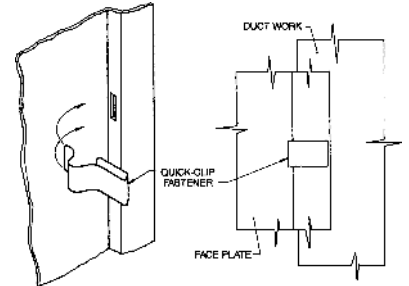
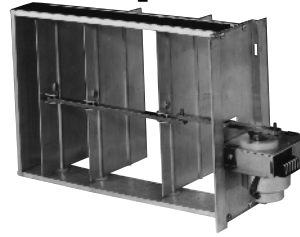
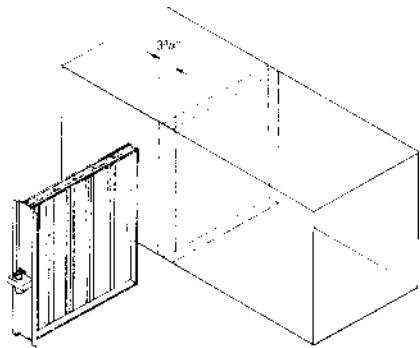
Printed in USA 12/00  
 ©2000 Duro Dyne Corp.  
 BP035422

#### ALL DuroZone DAMPERS FEATURE:

- 3 year limited warranty
- Controlled bypass
- Maintenance free operation
- Quick install mounting clips (except Round Dampers)
- 100% factory testing
- Screwless terminals
- Custom dampers and special controls are available on request.

# DuroZone® INSTALLATION INSTRUCTIONS

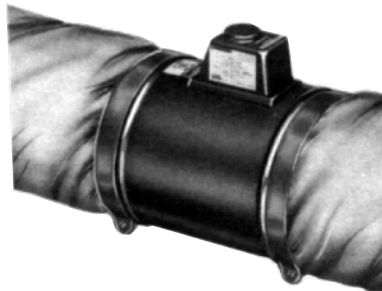
## Multi-Blade Zone Control Damper



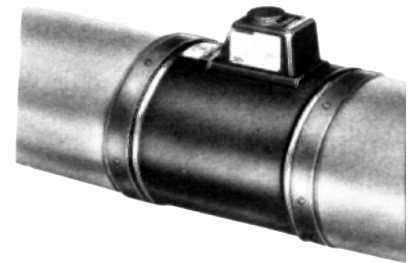
1. Cut 3 3/8" wide slot into side of sheet metal duct.
2. Slide damper into duct work.

3. Slide Quick Clip Fasteners outward to secure damper.

## RD SERIES ROUND DAMPER



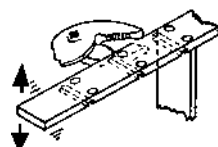
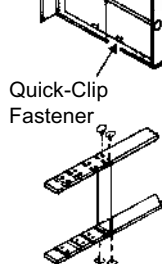
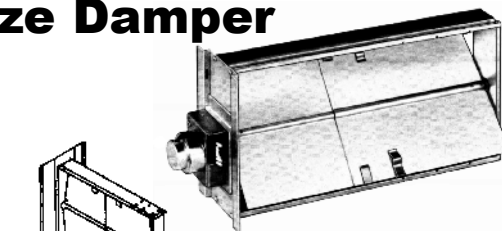
**In Flexible Round Duct**  
Slip duct over ends of DuroZone section & strap in place.



**In Rigid Round Duct**  
Slip duct over DuroZone section & screw in place.

## MS Series Multi-Size Damper

1. Determine duct size and size of damper required
2. Remove four (4) screws from frame end.
3. Adjust damper blade to desired size, and position Quick Clip Fasteners in indents on blades to secure blade halves.
4. Replace same four (4) screws as in Step 2; tighten completely.
5. With pliers, snap off excess frame at score mark bending downward first, then upward.



**CAUTION**  
Do not bend too far initially or the frame could be damaged.

6. Fit Neoprene weather strip (included) to size before installing damper. (Do not cover blade pivot at end opposite motor.)
7. At selected damper location, cut a 3 3/8 inch-wide slot in side of cut.
8. Slide damper into position in duct.
9. Slide Quick Clip Fasteners outward to secure damper.

