

DuroZone®

INSTALLATION INSTRUCTIONS

DS-11 SWITCH

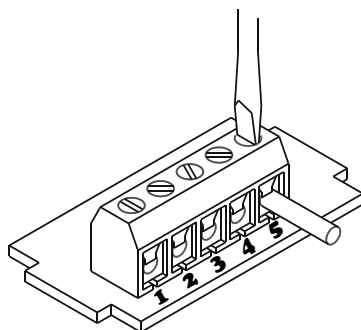
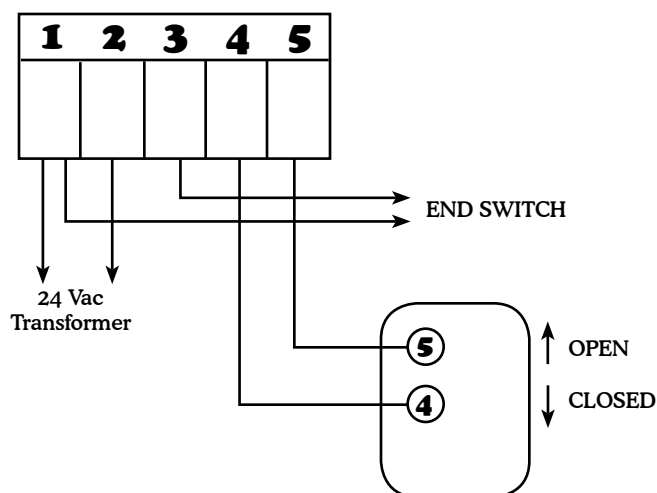


This is a wall mounted SPDT toggle used for remote opening and closing of DuroZone Dampers where switch operation rather than thermostat control is desired.

PREPARING THE CONTROL WIRING FOR THE MOTOR TERMINALS

1. Trim 1/4" off the end of the Control Wiring.
2. Loosen the screw on the Damper Motor Terminal Strip.
3. Insert the trimmed Control Wire.
4. Tighten the screw down.

WIRING FOR DUROZONE 5 POSITION MOTOR TERMINALS



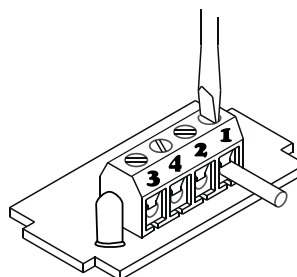
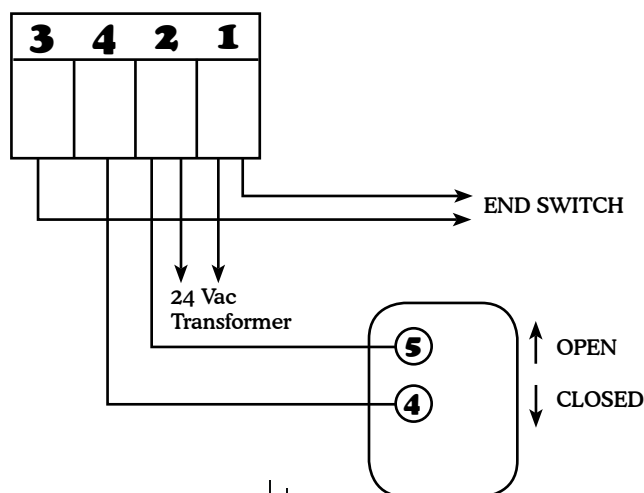
MOTOR TERMINAL IDENTIFICATION

Terminals 1 & 2: 24 volt input

Terminals 4 & 5: Thermostat Connections - Closing 4 & 5 will open the damper. Opening 4 & 5 will close the damper.

Terminal 3: End switch - Connecting an equipment relay across 1 & 3 of the damper motor will activate the equipment relay when the damper is open.

WIRING FOR DUROZONE 4 POSITION MOTOR TERMINALS



MOTOR TERMINAL IDENTIFICATION

Terminals 1 & 2: 24 volt input

Terminals 4 & 2: Thermostat Connections - Closing 4 & 2 will open the damper. Opening 4 & 2 will close the damper.

Terminal 3: End switch - Connecting an equipment relay across 1 & 3 of the damper motor will activate the equipment relay when the damper is open.

LED Indicator

Bi-Color LED indicates Red when damper is closed and Green when damper is open.

Duro Dyne East • Bay Shore, NY 11706 • Phone: 631-249-9000 • Fax: 631-249-8346

Duro Dyne Midwest • Fairfield, OH 45011 • Phone: 513-870-6000 • Fax: 513-870-6005

Duro Dyne West • Santa Fe Springs, CA 90670 • Phone: 562-926-1774 • Fax: 562-926-5778

DuroDyneCanada • Lachine • Quebec • Canada • Phone: 514-422-9760 • Fax: 514-636-0328

©2008 Duro Dyne Corporation
Printed in USA 7/2008

www.durodyne.com Email: durodyne@durodyne.com

ALL DUROZONE DAMPERS FEATURE:

- 5 year limited warranty • Controlled bypass • Maintenance free operation • 100% factory testing • Custom dampers and special controls are available on request.